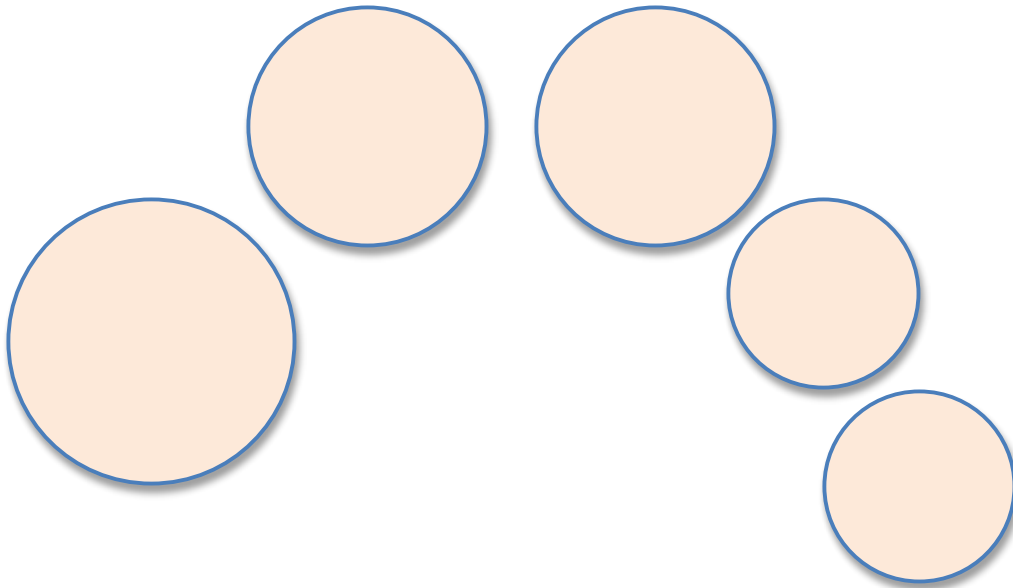


## Timpani Sizes and Playing Ranges



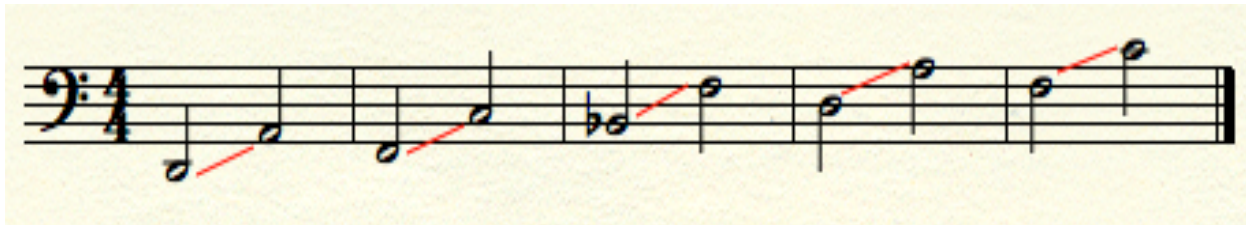
32"

29"/28"

26"/25"

23"

20"



Non-extended collar drums (counterhoop/rim is right next to bowl)

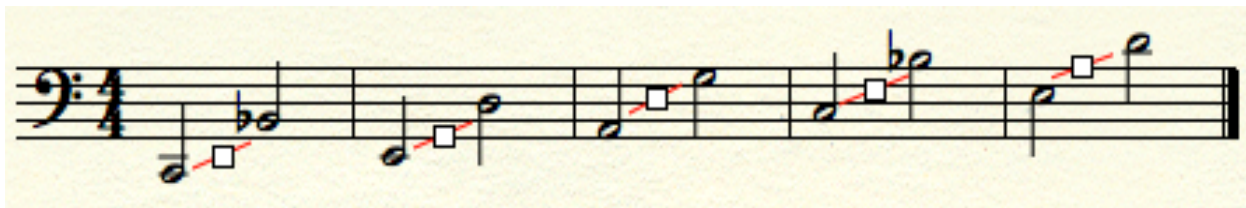
32"

29"/28"

26"/25"

23"

20"



Extended collar drums (counterhoop/rim is about 1" away from bowl)

- If a timpani is "out of range" (usually head will stretch out/go too low), the pedal will not hold in place & will slip (excluding pedals with locking ratchets)
- Be sure to set the correct range by matching the lowest note shown for each drum
- If the pedal continues to slip, the drumhead may be old & need replacing (head has lost resilience & strength/like a violin or guitar string going false)
- Heads with any dents, tears, or pitting need to be replaced/cannot resonate a clear pitch